

KiCad

The KiCad Team

REVISION HISTORY			
NUMBER	DATE	DESCRIPTION	NAME

Contents

1	Perkenalan	1
1.1	System Requirements	1
1.2	Berkas dan Folder KiCad	1
2	Installing and Upgrading KiCad	4
2.1	Importing settings	4
2.2	Migrating files from previous versions	5
3	Menggunakan Manajer Proyek KiCad	6
3.1	Jendela Manajer Proyek	6
3.2	Tampilan Pohon Proyek	7
3.3	Side toolbar	7
3.4	Membuat Proyek Baru	7
3.5	Importing a project from another EDA tool	8
4	KiCad configuration	9
4.1	Common preferences	9
4.2	Mouse and touchpad preferences	12
4.3	Hotkey preferences	13
4.4	Konfigurasi <i>Path</i>	14
4.4.1	Advanced environment variables	15
4.5	Libraries configuration	15
5	Templat Proyek	16
5.1	Menggunakan Templat	16
5.2	Lokasi Templat:	17
5.3	Membuat Templat	17
5.3.1	Template example	18
5.3.2	Berkas yang Dibutuhkan:	19
5.3.3	Berkas-berkas Tambahan:	20
6	Plugin and Content Manager	21
7	Actions reference	22
7.1	KiCad Project Manager	22

Panduan pengguna

Hak Cipta

This document is Copyright © 2010-2021 by its contributors as listed below. You may distribute it and/or modify it under the terms of either the GNU General Public License (<http://www.gnu.org/licenses/gpl.html>), version 3 or later, or the Creative Commons Attribution License (<http://creativecommons.org/licenses/by/3.0/>), version 3.0 or later.

All trademarks within this guide belong to their legitimate owners.

Kontributor

Jean-Pierre Charras, Fabrizio Tappero, Jon Evans.

Penerjemah

Triyan W. Nugroho.

Saran dan Komentar

The KiCad project welcomes feedback, bug reports, and suggestions related to the software or its documentation. For more information on how to submit feedback or report an issue, please see the instructions at <https://www.kicad.org/help/report-an-issue/>

Chapter 1

Perkenalan

KiCad is an open-source software suite for creating electronic circuit schematics and printed circuit boards (PCBs). KiCad supports an integrated design workflow in which a schematic and corresponding PCB are designed together, as well as standalone workflows for special uses. KiCad also includes several utilities to help with circuit and PCB design, including a PCB calculator for determining electrical properties of circuit structures, a Gerber viewer for inspecting manufacturing files, and an integrated SPICE simulator for inspecting circuit behavior.

KiCad runs on all major operating systems and a wide range of computer hardware. It supports PCBs with up to 32 copper layers and is suitable for creating designs of all complexities. KiCad is developed by a volunteer team of software and electrical engineers around the world with a mission of creating free and open-source electronics design software suitable for professional designers.

The latest version of this documentation is available at <https://docs.kicad.org>.

1.1 System Requirements

KiCad is capable of running on a wide variety of hardware and operating systems, but some tasks may be slower or more difficult on lower-end hardware. For the best experience, a dedicated graphics card and display with 1920x1080 or higher resolution is recommended.

Please check the KiCad website for the latest system requirements: <https://kicad.org/help/system-requirements/>

1.2 Berkas dan Folder KiCad

KiCad menggunakan ekstensi berkas berikut dalam pembuatan skematik dan papan sirkuit elektronik.

Berkas manajer proyek:

*.kicad_pro	Project file, containing settings that are shared between the schematic and PCB
*.pro	Legacy (KiCad 5.x and earlier) project file. Can be read and will be converted to a <i>.kicad_pro</i> file by the project manager.

Berkas editor skematik:

*.kicad_sch	Schematic files containing all info and the components themselves.
*.kicad_sym	Schematic symbol library file, containing the component descriptions: graphic shape, pins, fields.
*.sch	Legacy (KiCad 5.x and earlier) schematic file. Can be read and will be converted to a <i>.kicad_sch</i> file on write.
*.lib	Legacy (KiCad 5.x and earlier) schematic library file. Can be read but not written.

*.dcm	Legacy (KiCad 5.x and earlier) schematic library documentation. Can be read but not written.
*-cache.lib	Legacy (KiCad 5.x and earlier) schematic component library cache file. Required for proper loading of a legacy schematic (.sch) file.
sym-lib-table	Symbol library list (<i>symbol library table</i>): list of symbol libraries available in the schematic editor.

Berkas dan folder editor papan sirkuit:

*.kicad_pcb	Board file containing all info but the page layout.
*.pretty	Footprint library folders. The folder itself is the library.
*.kicad_mod	Footprint files, containing one footprint description each.
*.kicad_dru	Design rules file, containing custom design rules for a certain .kicad_pcb file.
*.brd	Legacy (KiCad 4.x and earlier) board file. Can be read, but not written, by the current board editor.
*.mod	Legacy (KiCad 4.x and earlier) footprint library file. Can be read by the footprint or the board editor, but not written.
fp-lib-table	Footprint library list (<i>footprint library table</i>): list of footprint libraries available in the board editor.
fp-info-cache	Cache to speed up loading of footprint libraries.

Berkas-berkas umum:

*.kicad_wks	Page layout (drawing border and title block) description file
*.net	Netlist file created by the schematic, and read by the board editor. This file is associated to the .cmp file, for users who prefer a separate file for the component/footprint association.
*.kicad_prl	Local settings for the current project, helps Kicad remember the last used settings such as layer visibility or selection filter. May not need to be distributed with the project or put under version control.

Berkas-berkas lain:

*.cmp	Hubungan antara komponen-komponen yang digunakan pada skematik dan <i>footprint</i> . Berkas ini dapat dibuat oleh Pcbnew dan diimpor oleh Eeschema. Berkas ini digunakan untuk mengimpor perubahan dari Pcbnew ke Eeschema, bagi pengguna yang mengubah <i>footprint</i> suatu komponen di dalam Pcbnew (misalnya dengan menggunakan perintah <i>Exchange Footprints</i>) dan ingin mengimpor perubahan tersebut ke skematik.
-------	---

Berkas-berkas lain:

Berkas-berkas berikut dibuat oleh KiCad untuk keperluan fabrikasi dan dokumentasi.

*.gbr	Berkas Gerber, untuk fabrikasi.
*.drl	Berkas <i>drill</i> (format Excellon), untuk fabrikasi.
*.pos	Berkas posisi (format ASCII), untuk mesin pemasang komponen otomatis.
*.rpt	Berkas laporan (format ASCII), untuk dokumentasi.
*.ps	Berkas <i>plot</i> (postscript), untuk dokumentasi.
*.pdf	Berkas <i>plot</i> (format pdf), untuk dokumentasi.
*.svg	Berkas <i>plot</i> (format SVG), untuk dokumentasi.
*.dxf	Berkas <i>plot</i> (format DXF), untuk dokumentasi.
*.plt	Berkas <i>plot</i> (format HPGL), untuk dokumentasi.

Storing and sending KiCad files

KiCad schematic and board files contain all the schematic symbols and footprints used in the design, so you can back up or send

these files by themselves with no issue. Some important design information is stored in the project file (*.kicad_pro*), so if you are sending a complete design, make sure to include it.

Some files, such as the project local settings file (*.kicad_prl*) and the *fp-info-cache* file, are not necessary to send with your project. If you use a version control system such as Git to keep track of your KiCad projects, you may want to add these files to the list of ignored files so that they are not tracked.

Chapter 2

Installing and Upgrading KiCad

2.1 Importing settings

Each major release of KiCad has its own configuration, so that you may run multiple KiCad versions on the same computer without the configurations interfering. The first time you run a new version of KiCad, you will be asked how to initialize the settings:



If a previous version of KiCad is detected, you will have the option to import the settings from that version. The location of the previous configuration files is detected automatically, but you may override it to choose another location if desired.

Please note that, the schematic symbol and footprint library tables from the previous version of KiCad will **not** be imported.

You may also choose to start with default settings if you do not want to import settings from a previous version.

KiCad stores the settings files in a folder inside your user directory. Each KiCad version will store its settings in a subfolder of that folder (except for KiCad 5.1 and earlier, which did not use subfolders). Those folders are:

Windows	%APPDATA%\kicad
Linux	~/.config/kicad
Mac OS	/Users/<username>/Library/Preferences/kicad

2.2 Migrating files from previous versions

Modern versions of KiCad can open files created in earlier versions, but can only write files in the latest formats. This means that in general, there are no special steps to migrate files from a previous version besides opening the files. In some cases, the file extension for a file has changed from one KiCad version to the next. After opening these files, they will be saved in the new format with the new file extension. The old files will not be deleted automatically.

In general, files created or modified by one version of KiCad **cannot** be opened by older versions of KiCad. For this reason, it is important to keep backup copies of your projects when testing a new KiCad release, until you are confident that you will not need to use the older KiCad version anymore.

Note

Hotkey configurations are not imported from previous versions at this time. You can manually import hotkey configurations by copying the various `*.hotkeys` files from the old version configuration directory to the new one. If you do so, please note that KiCad will not automatically detect conflicts such as one key being assigned to multiple actions.

Chapter 3

Menggunakan Manajer Proyek KiCad

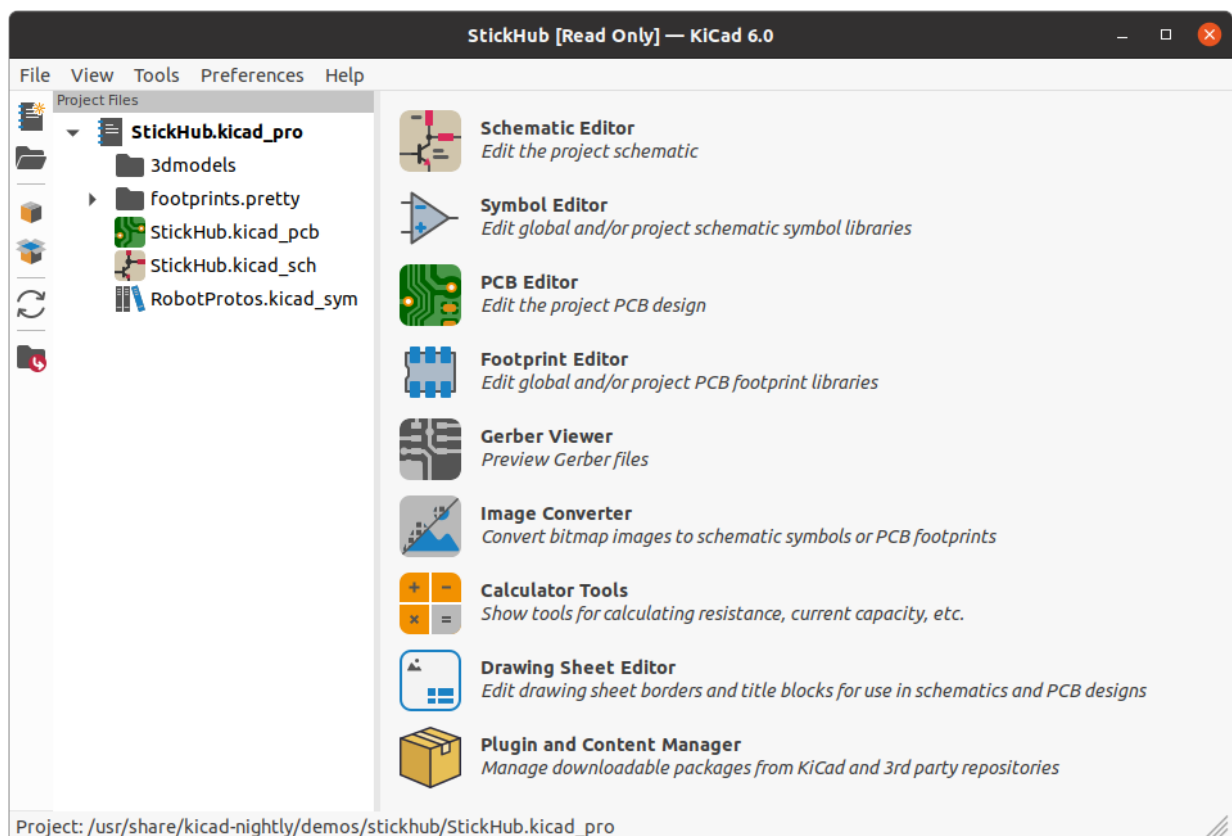
KiCad project manager (kicad or kicad.exe) is a tool which can easily run the other tools (schematic and board editors, Gerber viewer and utility tools) when creating a design.

Menjalankan aplikasi dari Manajer KiCad memiliki beberapa keuntungan, antara lain:

- menjaga saling keterkaitan antara editor skematik dan editor papan sirkuit.
- synchronization of the design between the schematic editor and board editor (without creating netlist files)

KiCad currently only supports having one project open at a time. When running the schematic and board editors from the KiCad project manager, you can only edit the schematics and board associated with the open project. When these tools are run in *stand alone* mode, you can open any file in any project, but cross probing between tools can give strange results.

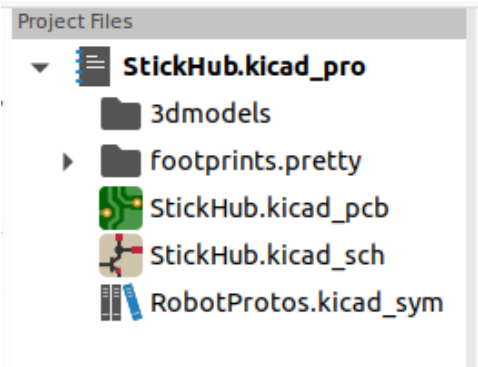
3.1 Jendela Manajer Proyek



The KiCad project manager window is composed of a tree view on the left showing the files associated with the open project, and a launcher on the right containing shortcuts to the various editors and tools.

3.2 Tampilan Pohon Proyek

The tree view shows a list of files inside the project folder. Double-clicking on a file in the tree view will open it in the associated editor. Right-clicking on a file will open a context menu with some file manipulation commands.



Note

Only files that KiCad understands how to open are displayed in the project tree view.

3.3 Side toolbar

The toolbar on the left side of the window provides shortcuts for common project operations:

	Create a new project.
	Open an existing project.
	Create a zip archive of the whole project. This includes schematic files, libraries, PCB, etc.
	Extract a project zip archive into a directory. Files in the destination directory will be overwritten.
	Refresh the tree view, to detect changes made on the filesystem.
	Open the project working directory in a file explorer.

3.4 Membuat Proyek Baru

Most KiCad designs start with the creation of a project. There are two ways to create a project from the KiCad project manager: you may create an empty project, or create a project based on an existing template. This section will cover the creation of a new, empty project. Creating projects from templates is covered in the [Project Templates](#) section.

To create a new project, use the **New Project...** command in the **File** menu, click the **New Project** button in the top toolbar, or use the keyboard shortcut (**Ctrl+N** by default).

You will be prompted for a name to give your project. By default, a directory will be created for your project with the same name. For example, if you enter the name `MyProject`, KiCad will create the directory `MyProject` and the project file `MyProject/MyProject.kicad_pro` inside it.

If you already have a directory to store your project files in, you can uncheck the *Create a new directory for the project* checkbox in the **New Project** dialog.

Note

It is strongly recommended that you store each KiCad project inside its own directory.

Once you select the name of your project, KiCad will create the following files inside the project directory:

<code>example.kicad_pro</code>	KiCad project file.
<code>example.kicad_sch</code>	Main schematic file.
<code>example.kicad_pcb</code>	Printed circuit board file.

3.5 Importing a project from another EDA tool

KiCad is able to import files created by some other software packages. Currently the following types of project are supported:

<code>*.sch, *.brd</code>	Eagle 6.x or newer (XML format)
<code>*.csa, *.cpa</code>	CADSTAR archive format

To import a project from one of these tools, choose the appropriate option from the **Import Non-KiCad Project** submenu of the **File** menu.

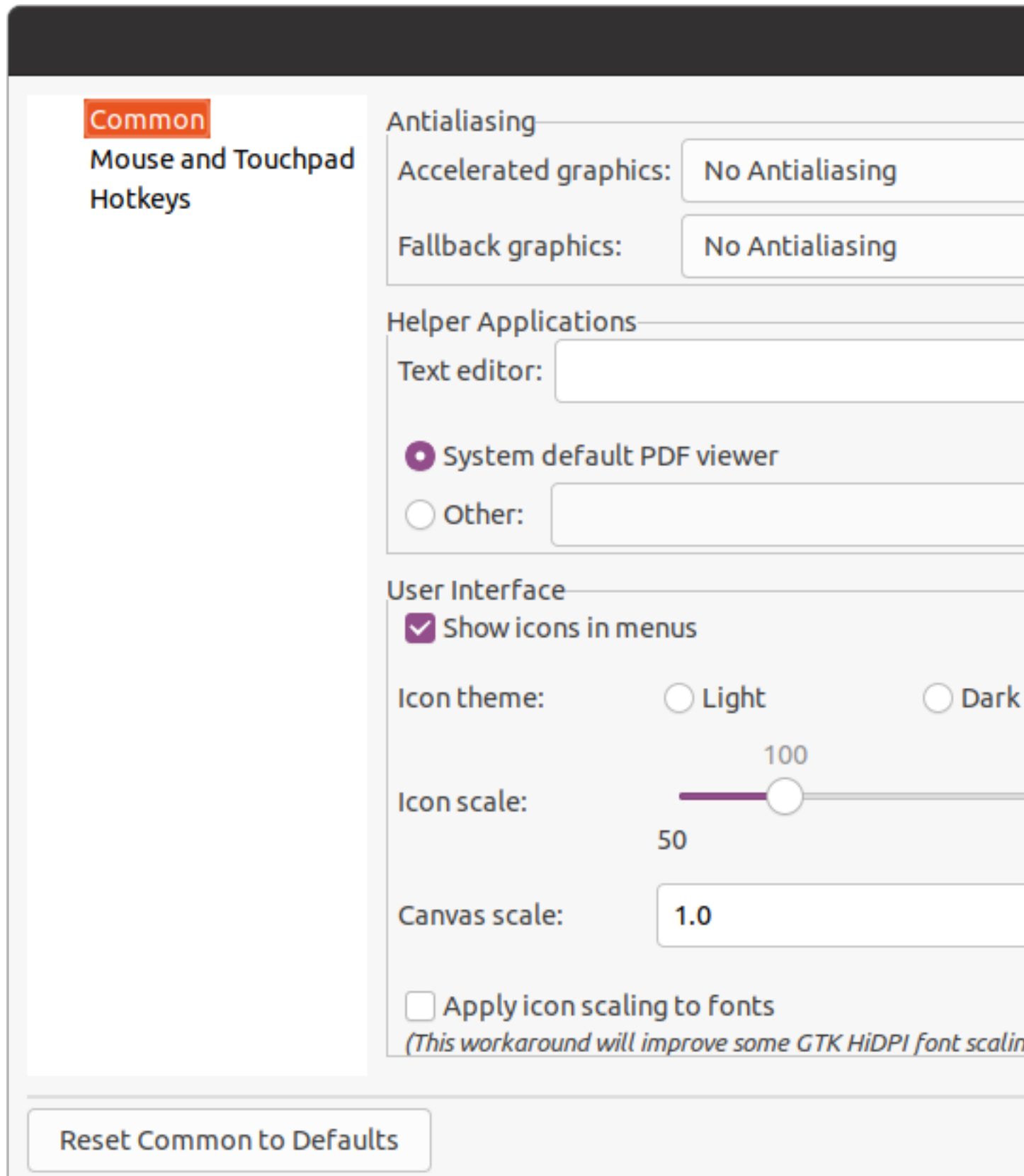
You will be prompted to select either a schematic or a board file in the import file browser dialog. The imported schematic and board files should have the same base file name (e.g. `project.sch` and `project.brd`). Once the requested files are selected, you will be asked to select a directory to store the resulting KiCad project.

Chapter 4

KiCad configuration

The KiCad preferences can always be accessed from the **Preferences** menu, or by using the hotkey (default `Ctrl+,`). The Preferences dialog is shared between the running KiCad tools. Some preferences apply to all tools, and some are specific to a certain tool (such as the schematic or board editor).

4.1 Common preferences



Accelerated graphics antialiasing: KiCad can use different methods to prevent aliasing (jagged lines) when rendering using a graphics card. Different methods may look better on different hardware, so you may want to experiment to find the one that looks best to you.

Fallback graphics antialiasing: KiCad can also apply antialiasing when using the fallback graphics mode. Enabling this feature may result in poor performance on some hardware.

Text editor: Choose a text editor to use when opening text files from the project tree view.

PDF viewer: Choose a program to use when opening PDF files.

Show icons in menus: Enables icons in drop-down menus throughout the KiCad user interface.

Note

Icons in menus are not displayed on some operating systems.

Icon theme: Sets whether to use the icon theme designed for light window backgrounds or dark window backgrounds. The default setting of *Automatic* will choose the theme based on the lightness of the operating system window theme.

Icon scale: Sets the size of the icons used in menus and buttons throughout KiCad. Choose *Automatic* to pick an appropriate icon scale automatically based on your operating system settings.

Canvas scale: Sets the scale of the drawing canvas used in the KiCad editors. Choose *Automatic* to pick an appropriate canvas scale automatically based on your operating system settings.

Apply icon scaling to fonts: This setting will scale fonts used in the UI according to the icon scale setting. This is not needed for most users, but may improve the look of KiCad on certain Linux platforms when using a high-DPI display.

Warp mouse to origin of moved object: When enabled, the mouse cursor will be repositioned (warped) to the origin of an object when you start a move command on that object.

First hotkey selects tool: When disabled, pressing the hotkey for a command such as *Add Wire* will immediately start the command at the current cursor location. When enabled, pressing the hotkey the first time will just select the *Add Wire* tool but will not immediately begin a wire.

Remember open files for next project launch: When enabled, KiCad will automatically re-open any files that were previously open when a project is re-opened.

Auto save: When editing schematics and board files, KiCad can automatically save your work periodically. Set to 0 to disable this feature.

File history size: Configure the number of entries in the list of recently-opened files

3D cache file duration: KiCad creates a cache of 3D models in order to speed up the 3D viewer. You can configure how long to keep this cache before deleting old files.

Automatically backup projects: When enabled, KiCad projects will be archived to ZIP files automatically according to the settings below. The archives will be stored in a subfolder of the project folder. Backups are created when saving files in the project.

Create backups when auto save occurs: When enabled, a backup will be created every time an automatic file save occurs (if the backup is permitted by the settings below). This setting has no effect if the auto save interval is set to 0 (disabled).

Maximum backups to keep: When creating a new backup, the oldest backup file will be deleted to keep the total number of backup files below this limit.

Maximum backups per day: When creating a new backup, the oldest backup file created on the current day will be deleted to stay below this limit.

Minimum time between backups: If backup is triggered (for example, by saving a board file), the backup will not be created if an existing backup file is newer than this limit.

Maximum total backup size: When creating a new backup file, the oldest backup files will be deleted to keep the total size of the backup files directory below this limit.

Remember open files for next project launch: When checked, KiCad will re-open the schematic and board editor if they were open the last time you closed the project manager.

4.2 Mouse and touchpad preferences

The screenshot shows the 'Mouse and Touchpad' preferences window. On the left is a sidebar with three categories: 'Common', 'Mouse and Touchpad' (which is highlighted with an orange background), and 'Hotkeys'. The main area is divided into three sections: 'Pan and Zoom', 'Drag Gestures', and 'Scroll Gestures'. In the 'Pan and Zoom' section, the checkbox 'Center and warp cursor on zoom' is checked, while 'Use zoom acceleration' is unchecked. A 'Zoom speed' slider is positioned at the minimum. The 'Drag Gestures' section shows 'Left button drag' set to 'Drag selected objects; other actions', 'Middle button drag' set to 'Pan', and 'Right button drag' set to 'Pan'. The 'Scroll Gestures' section has a header 'Vertical touchpad or scroll wheel movement:' followed by a table of gesture mappings. The table has columns for movement direction (vertical, horizontal, diagonal) and modifier keys (Ctrl, Shift, Alt). The 'Zoom' row has a selected dot under the vertical column. The 'Pan up/down' row has a selected dot under the Shift column. The 'Pan left/right' row has a selected dot under the horizontal column. At the bottom of the 'Scroll Gestures' section is an unchecked checkbox 'Pan left/right with horizontal movement'. A 'Reset Mouse and Touchpad to Defaults' button is located at the bottom left of the dialog.

Common
Mouse and Touchpad
Hotkeys

Pan and Zoom

- ☒ Center and warp cursor on zoom
- ☐ Use zoom acceleration

Zoom speed:

Drag Gestures

Left button drag: Drag selected objects; other actions

Middle button drag: Pan

Right button drag: Pan

Scroll Gestures

Vertical touchpad or scroll wheel movement:

	–	Ctrl	Shift	Alt
Zoom:	<input checked="" type="radio"/>	<input type="radio"/>	<input type="radio"/>	<input type="radio"/>
Pan up/down:	<input type="radio"/>	<input type="radio"/>	<input checked="" type="radio"/>	<input type="radio"/>
Pan left/right:	<input type="radio"/>	<input checked="" type="radio"/>	<input type="radio"/>	<input type="radio"/>

☐ Pan left/right with horizontal movement

Reset Mouse and Touchpad to Defaults

Center and warp cursor on zoom: When enabled, zooming using the hotkeys or mouse wheel will cause the view to be centered

on the cursor location.

Use zoom acceleration: When enabled, scrolling the mouse wheel or touchpad faster will cause the zoom to change faster.

Zoom speed: Controls how much the zoom changes for a given amount of scrolling the mouse wheel or touchpad. Use *Automatic* to set a default value depending on your operating system.

Automatically pan while moving object: When enabled, the view can be panned while moving an object by moving close to the edge of the canvas.

Auto pan speed: Controls how fast the canvas pans while moving an object.

Mouse buttons: You can set the behavior of dragging the middle and right mouse buttons to zoom the view, pan the view, or have no effect. You can also set the behavior of dragging the left mouse button depending on whether or not any objects are already selected in the editing canvas.

Note

The left mouse button is always used for selecting and manipulating objects.

Mouse wheel and touchpad scrolling: You can set the behavior of scrolling the mouse wheel or vertical motion of the touchpad while pressing certain modifier keys.

Pan left/right with horizontal movement: When enabled, you can pan the view using the touchpad or horizontal scroll wheel (if present on your mouse).

4.3 Hotkey preferences



You can use this dialog to customize the hotkeys used to control KiCad. The hotkeys in the *Common* section are shared between every KiCad program. Hotkeys for each specific KiCad program are shown when that program is running. You can assign the same hotkey to a different action in different KiCad programs (for example, the schematic editor and the board editor), but you cannot assign a hotkey to more than one action in the same program.

There are many available commands, and so not all of them have a hotkey assigned by default. You can add a hotkey to any command by double-clicking on the command in the list. If you choose a hotkey that is already assigned to a different command, you can choose to use that hotkey on your chosen command, which will remove the hotkey assignment from the conflicting command.

Changes that you have made to hotkey assignments are shown with a * character at the end of the command name. You can undo changes to a specific command by right-clicking that command and selecting *Undo Changes*, or you can undo all changes with the button below the command list.

Importing hotkeys

Hotkey preferences are stored in `.hotkeys` files in the KiCad settings directory (see the [Settings](#) section for information about where the settings directory is on your operating system). If you have configured KiCad hotkeys the way you like on one computer, you can transfer that configuration to another computer by importing the appropriate `.hotkeys` file(s).

4.4 Konfigurasi *Path*

Di KiCad, kita bisa mendefinisikan beberapa *path* dengan menggunakan *environment variable*. KiCad mendefinisikan beberapa *environment variable* secara internal, dan bisa digunakan untuk mendefinisikan *path* untuk pustaka, bentuk 3D, dan sebagainya.

Hal ini berguna ketika *path* absolut tidak diketahui atau akan ada perubahan (misalnya saat Anda mentransfer sebuah proyek ke komputer lain), dan juga ketika satu *path* dasar dibagi oleh item-item yang mirip. Pertimbangkan hal berikut yang bisa diinstal pada berbagai lokasi yang berbeda:

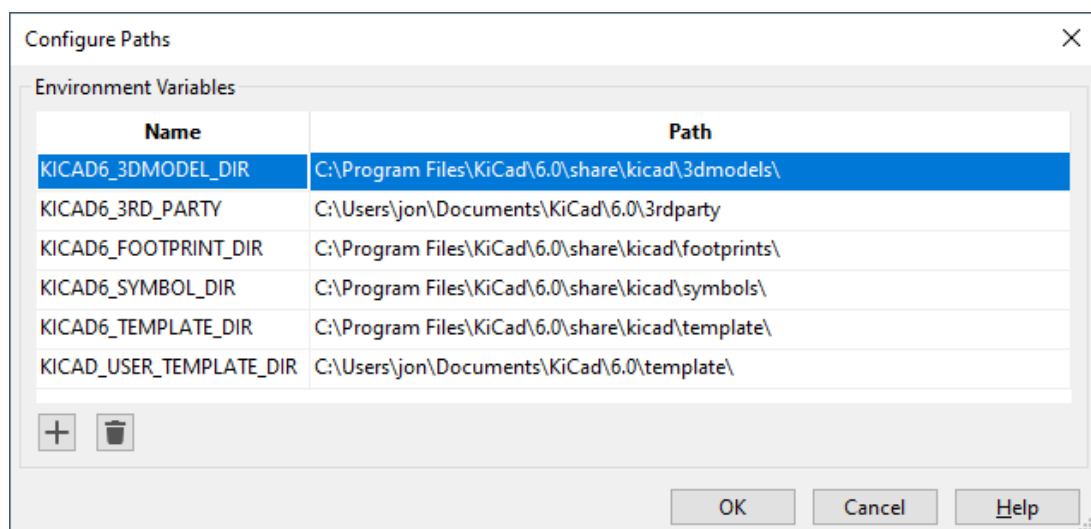
- Schematic symbol libraries
- Footprint libraries
- berkas-berkas bentuk 3D yang digunakan pada definisi *footprint*

For instance, the path to the `connect.pretty` footprint library, when using the `KICAD6_FOOTPRINT_DIR` environment variable, would be defined as `${KICAD6_FOOTPRINT_DIR}/connect.pretty`.

The **Preferences** → **Configure Paths...** menu allows you to define paths for some built-in KiCad environment variables, and add your own environment variables to define personal paths, if needed.

Beberapa *environment variable* KiCad:

KICAD6_3DMODEL_DIR	Base path of 3D models used in footprints.
KICAD6_3RD_PARTY	Location for plugins, libraries, and color themes installed by the Plugin and Content Manager .
KICAD6_FOOTPRINT_DIR	Base path of footprint library files.
KICAD6_SYMBOL_DIR	Base path of symbol library files.
KICAD6_TEMPLATE_DIR	Location of project templates installed with KiCad.
KICAD_USER_TEMPLATE_DIR	Location of personal project templates.



Paths set in the Configure Paths dialog are internal to KiCad and are not visible as environment variables outside of KiCad. They are stored in [KiCad's user configuration files](#).

Paths can also be set as environment variables outside of KiCad, which will override any settings in the user's configuration.

Note

You cannot override an environment variable that has been set outside of KiCad by using the Configure Paths dialog. Any variable that has been set externally will be shown as read-only in the dialog.

Note also that the environment variable `KIPRJMOD` is **always** internally defined by KiCad, and expands to the **current project absolute path**.

For instance, `${KIPRJMOD}/connect.pretty` is always the `connect.pretty` folder (the footprint library) inside **the current project folder**.

The `KIPRJMOD` variable cannot be changed in the Configure Paths dialog or overridden by an external environment variable.

4.4.1 Advanced environment variables

Some advanced environment variables can be set to customize KiCad's behavior. These variables are not shown in the environment variable configuration and cannot be used in path substitutions. They cannot be modified in the Configure Paths dialog, but they can be overridden by system environment variables.

Changing these variables will not result in KiCad moving any files from the default location to the new location, so if you change these variables you will need to copy any desired settings or files manually.

Additional environment variables:

<code>KICAD_CONFIG_HOME</code>	Base path of KiCad configuration files. Subdirectories will be created within this directory for each KiCad minor version.
<code>KICAD_DOCUMENTS_HOME</code>	Base path of KiCad user-modifiable documents, such as projects, templates, Python scripts, libraries, etc. Subdirectories will be created within this directory for each KiCad minor version. This directory is provided as a suggested user data location, but does not need to be used.



Warning

If you modify the configuration of paths, please quit and restart KiCad to avoid any issues in path handling.

4.5 Libraries configuration

The **Preferences** → **Manage Symbol Libraries...** menu lets you manage the list of symbol libraries (**symbol library table**).

Likewise, use the **Preferences** → **Manage Footprint Libraries...** menu to manage the list of footprint libraries (**footprint library table**).

For each type of library (symbol and footprint), there are 2 library tables: global and project specific. The global library table is located in the [user configuration directory](#) and contains a list of libraries available to all projects. The project-specific library table is optional and contains a list of libraries specific to the project. It is located in the project directory.

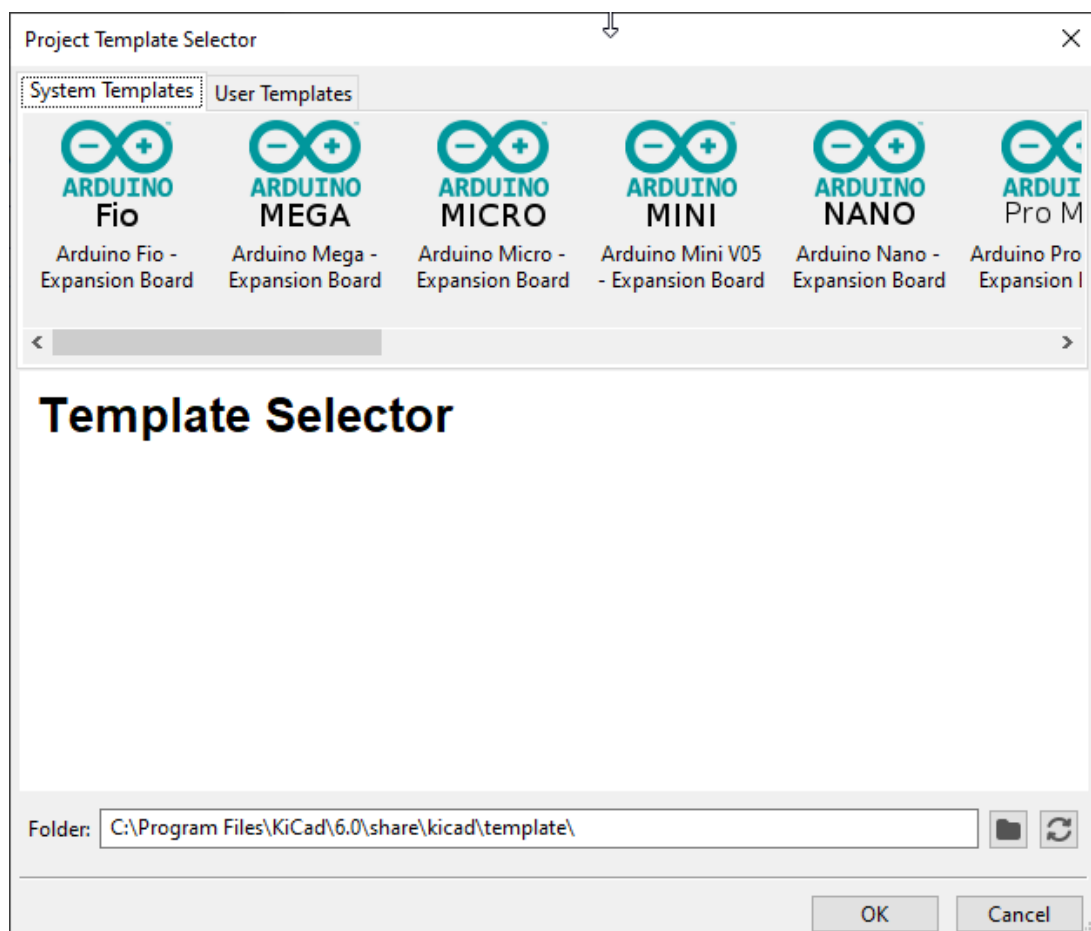
Chapter 5

Templat Proyek

Penggunaan templat proyek akan memudahkan kita dalam melakukan pengaturan sebuah proyek baru dengan pengaturan yang telah ditentukan sebelumnya. Templat mungkin berisi bentuk papan PCB yang sudah ditentukan, berbagai posisi konektor, elemen-elemen skematik, aturan desain, dan sebagainya. Dimungkinkan juga untuk memasukkan berkas skematik dan/atau PCB yang lengkap sebagai berkas-berkas awal proyek baru.

5.1 Menggunakan Templat

Menu **File** → **New Project** → **New Project from Template** akan membuka dialog *Project Template Selector*:



Klik pada sebuah ikon templat akan menampilkan informasi templat, dan klik OK untuk membuat proyek baru. Berkas-berkas templat akan disalin ke dalam lokasi proyek yang baru, dengan nama berkas yang sesuai dengan nama proyek yang baru.

Setelah memilih sebuah templat:



5.2 Lokasi Templat:

KiCad akan mencari berkas-berkas templat pada *path* berikut:

- path defined in the environment variable KICAD_USER_TEMPLATE_DIR
- path defined in the environment variable KICAD_TEMPLATE_DIR
- Templat sistem: <kicad bin dir>../share/kicad/template/
- Templat pengguna:
 - Unix: ~/kicad/template/
 - Windows: C:\Documents and Settings\username\My Documents\kicad\template or C:\Users\username\Documents\kicad\template
 - Mac: ~/Documents/kicad/template/

5.3 Membuat Templat

Nama templat adalah nama direktori penyimpanan berkas-berkas templat. Direktori metadata adalah sebuah subdirektori dengan nama **meta** yang berisi berkas-berkas yang menjelaskan templat tersebut.

Metadata berisi satu buah berkas yang dibutuhkan, dan mungkin berisi beberapa berkas opsional. Seluruh berkas harus dibuat oleh pengguna dengan menggunakan editor teks atau berkas proyek KiCad sebelumnya, dan diletakkan di dalam struktur direktori yang diperlukan.

All files and directories in a template are copied to the new project path when a project is created using a template, except **meta**. Files and directories containing the template name will be renamed with the new project file name.

For example, creating a project called **newproject** from a template named **example**:

Files in template example directory	Files created in project newproject directory
example.kicad_pro	newproject.kicad_pro
example.kicad_sch	newproject.kicad_sch
example.kicad_pcb	newproject.kicad_pcb
example-first.kicad_sch	newproject-first.kicad_sch
second-example.kicad_sch	second-newproject.kicad_sch
third.kicad_sch	third.kicad_sch
third.kicad_pcb	third.kicad_pcb

A template does not need to contain a complete project, if a required project file is missing, KiCad will create it using its default create project behavior:

Files in template example directory	Files created in newproject directory
example.kicad_sch	newproject.kicad_sch
first-example.kicad_sch	first-newproject.kicad_sch
first-example.kicad_pcb	first-newproject.kicad_pcb
second-example.kicad_sch	second-newproject.kicad_sch
second-example.kicad_pcb	second-newproject.kicad_pcb
	newproject.kicad_pro (default)
	newproject.kicad_pcb (default)

As an exception to the template name renaming rule, if one project file (.kicad_pro) exists and its name doesn't match the template name, KiCad will do the renaming based on that project file name instead:

Files in template example directory	Files created in newproject directory
example.kicad_sch	example.kicad_sch
example.kicad_pcb	example.kicad_pcb
first-example.kicad_pro	newproject.kicad_pro
first-example.kicad_sch	newproject.kicad_sch
first-example.kicad_pcb	newproject.kicad_pcb
second-example.kicad_sch	second-example.kicad_sch
second-example.kicad_pcb	second-example.kicad_pcb

Note

It is not recommended to create a template with multiple project files.

5.3.1 Template example

Berikut adalah contoh berkas-berkas proyek untuk templat **raspberrypi-gpio**:



Dan berkas-berkas metadata:



5.3.2 Berkas yang Dibutuhkan:

meta/info.html	Informasi dalam format HTML berisi penjelasan templat.
----------------	--

The <title> tag determines the actual name of the template that is exposed to the user for template selection. Note that the project template name will be cut off if it's too long.

Penggunaan HTML berarti gambar bisa dengan mudah dimasukkan tanpa perlu membuat skema yang baru. Hanya tag-tag HTML dasar yang dapat digunakan pada dokumen ini.

Berikut adalah contoh berkas **info.html**:

```
<!DOCTYPE HTML PUBLIC "-//W3C//DTD HTML 4.0 Transitional//EN">
<HTML>
<HEAD>
<META HTTP-EQUIV="CONTENT-TYPE" CONTENT="text/html;
charset=windows-1252">
<TITLE>Raspberry Pi - Expansion Board</TITLE>
</HEAD>
<BODY LANG="fr-FR" DIR="LTR">
```

```
<P>This project template is the basis of an expansion board for the
<A HREF="http://www.raspberrypi.org/" TARGET="blank">Raspberry Pi $25
ARM board.</A> <BR><BR>This base project includes a PCB edge defined
as the same size as the Raspberry-Pi PCB with the connectors placed
correctly to align the two boards. All IO present on the Raspberry-Pi
board is connected to the project through the 0.1" expansion
headers. <BR><BR>The board outline looks like the following:
</P>
<P><IMG SRC="brd.png" NAME="brd" ALIGN=BOTTOM WIDTH=680 HEIGHT=378
BORDER=0><BR><BR><BR><BR>
</P>
<P>(c) 2012 Brian Sidebotham<BR>(c) 2012 KiCad Developers</P>
</BODY>
</HTML>
```

5.3.3 Berkas-berkas Tambahan:

meta/icon.png	Ikon berformat PNG dengan ukuran 64 x 64 piksel yang digunakan sebagai ikon yang bisa di-klik pada kotak dialog pemilihan templat.
---------------	--

Berkas-berkas gambar lain yang digunakan oleh **meta/info.html**, seperti gambar berkas papan PCB pada dialog di atas, juga diletakkan pada folder ini.

Chapter 6

Plugin and Content Manager

Note

TODO: Write this section

Chapter 7

Actions reference

Below is a list of every available **action** in the KiCad Project Manager: a command that can be assigned to a hotkey.

7.1 KiCad Project Manager

The actions below are available in the KiCad Project Manager. Hotkeys can be assigned to any of these actions in the **Hotkeys** section of the preferences.

Action	Default Hotkey	Description
New Project. . .	kbd:[Ctrl+N]	Create new blank project
New Project from Template. . .	kbd:[Ctrl+T]	Create new project from template
Open Project. . .	kbd:[Ctrl+O]	Open an existing project
Open Demo Project. . .		Open a demo project
Close Project		Close the current project
Schematic Editor	kbd:[Ctrl+E]	Edit schematic
Symbol Editor	kbd:[Ctrl+L]	Edit schematic symbols
PCB Editor	kbd:[Ctrl+P]	Edit PCB
Footprint Editor	kbd:[Ctrl+F]	Edit PCB footprints
Gerber Viewer	kbd:[Ctrl+G]	Preview Gerber output files
Image Converter	kbd:[Ctrl+B]	Convert bitmap images to schematic or PCB components
Calculator Tools		Run component calculations, track width calculations, etc.
Drawing Sheet Editor	kbd:[Ctrl+Y]	Edit drawing sheet borders and title block
Plugin and Content Manager	kbd:[Ctrl+M]	Manage downloadable packages from KiCad and 3rd party repositories
Open Text Editor		Launch preferred text editor